

GHD Monthly Newsletter

May 2021

The Global Help Desk (GHD) presents this monthly newsletter to introduce ourselves and let you know some recent domestic news, event information, and recent IBS news. All information presented in the newsletter is available online, and to read the full contents you'll need to be connected to the internet. We hope this information is useful to you. Also, visit the website Living in Korea at www.ibs.re.kr/livinginkorea. Hosted by IBS, it has hundreds of pages of contents and photos to help you thrive, not simply survive.

Living in Korea Highlight

The Korean Immigration and Integration Program, better known as KIIP, is a language program hosted by Immigration with expenses only being for books and exam fees. While its target audience is mixed married couples, these language classes are open for international residents residing in Korea. The program has shifted to purely online classes due to COVID and is used for learning the language in general or for obtaining an F series visa. A good [overview page with a number of related links](#) is available.

Domestic News



‘Congratulations Youn Yuh-jung’ heard all around

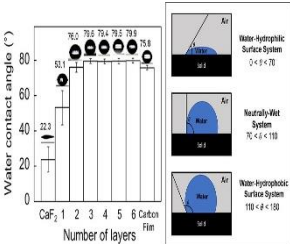
With Youn Yuh-jung making history by becoming the first Korean to win an Academy Award for acting, social media was flooded with posts congratulating the feat by the 73-year-old veteran actor.
[Click to read more.](#)



Samsung, Hyundai prepare massive US investments ahead of Moon-Biden summit

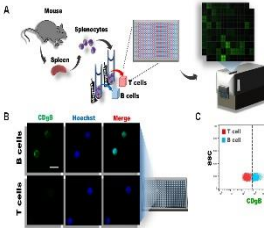
Samsung and Hyundai Motor Group are set to make massive investments in the United States ahead of a summit between President Moon Jae-in and U.S. President Joe Biden in late May.
[Click to read more.](#)

IBS News & Events



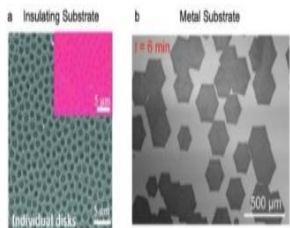
Identification of the wettability of graphene layers at the molecular level

Graphene is a two-dimensional material in which carbon atoms are arranged in hexagonal structures, and it has unique physical and chemical properties such as sub-nanometer thickness, chemical stability, mechanical flexibility, electrical and thermal conductivity, optical transparency, and selective permeability to water. [Read more](#)



A new fluorescent probe that can distinguish B cells from T cells

Human blood contains several different components, including plasma, red blood cells (RBCs), white blood cells (WBCs), and platelets. [Read more](#)



Understanding Graphene Growth on Insulating Substrates

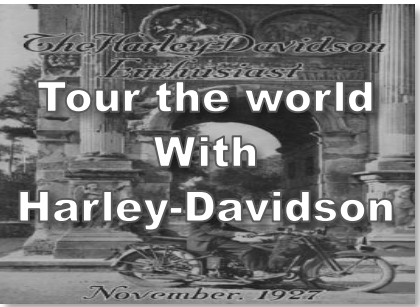
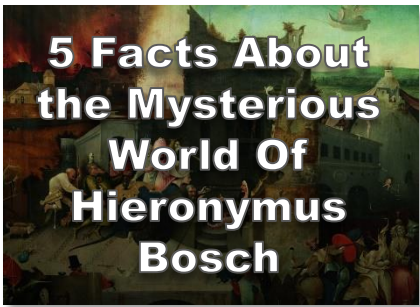
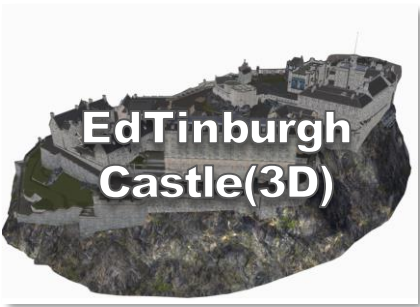
The thinnest material, graphene, is the most promising materials for many applications, such as in electronics, energy storage and etc. For high performance electronic applications, synthesizing graphene directly on an insulating substrate is highly desired. [Read more](#)

Coronavirus Lockdown Pastime Tips

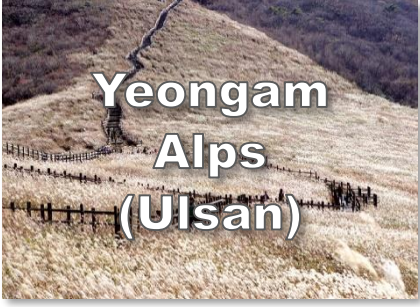
Art & Culture



Free Entertainment



Outdoor Trails



Let’s Learn Korean!

[Click here](#) for a good intro to the Korean language.

And [click here](#) to find information on the free language classes hosted by IBS and other learning options.



GHD: Who We Are



ETNERS

co., LTD.

Yongtaek Seo

Global Help Desk



7Fl., Uspace II-B 670, Daewangpangyo-ro, Sampyeong-dong, Bundang-gu, Seongnam-si, Gyeonggi-do, Korea